

## INTEGRAL STATION FOR SOLAR PLANTS

### SUNZET POWER STATION

Concrete building containing inverters, medium-voltage transformer & medium-voltage cells

#### Description



Zigor Corporation offers PV solar market a plug-and-play solution to reduce the engineering and civil works while designing and building a Megawatt PV plant.

The Sunzet Power Station, available in 250 KW, 500 KW and 1 MW power is the key solution to improve reliability and yield of solar plants. It has been designed to optimise wiring and size as well as to easy PV plant construction.

The Sunzet Power Station is delivered completely finished with the internal wiring fully done. The customer has only to connect the solar field and the Grid to the building inlets.



Sunzet Power Station

#### Features

##### The Sunzet Power Station includes:

- > Concrete building
- > PV inverters (250 KW, 500 KW or 1 MW)
- > Medium voltage transformer up to 36 KV (reduced losses)
- > Medium voltage cells according to National Grid Codes
- > Security and protective devices
- > Integrated cooling system to assure optimum performance
- > Lighting, power sockets, grounding network
- > AC protection board with breakers
- > Complete internal wiring between devices
- > Start-up at the site

##### Options:

- > Concentration boxes - Level II
- > SWS 1000 SCADA System for monitoring
- > Metering equipment



Sunzet Power Station

on-grid solar plants

mid voltage solar plants

hybrid generation

energy saving

telecom back up

wind energy

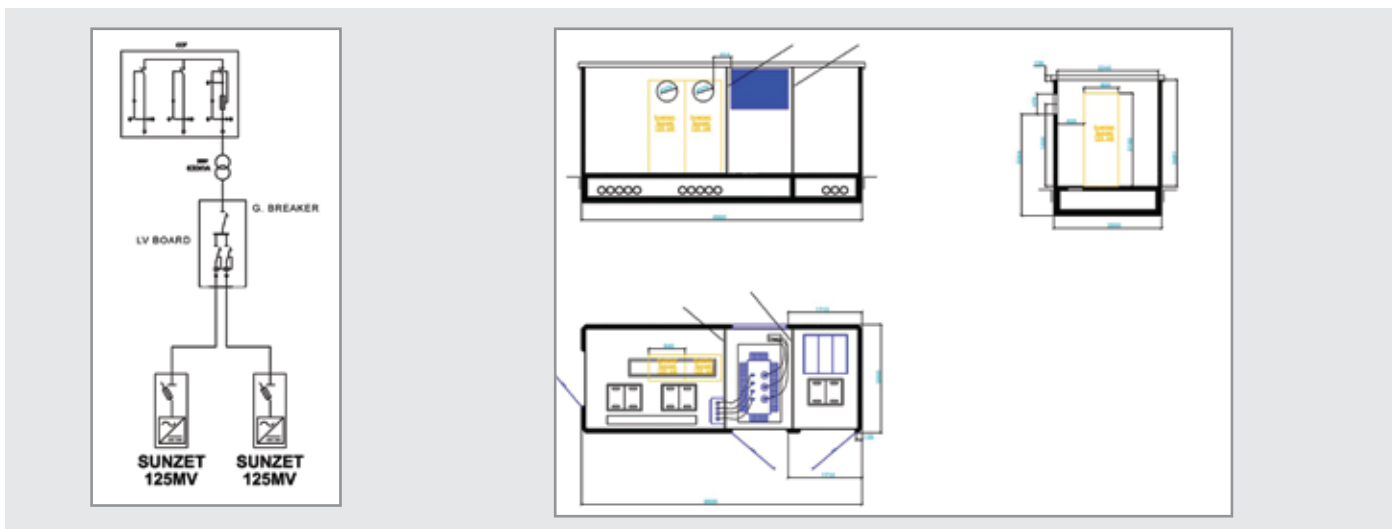


NON - STOP POWER

ZIGOR

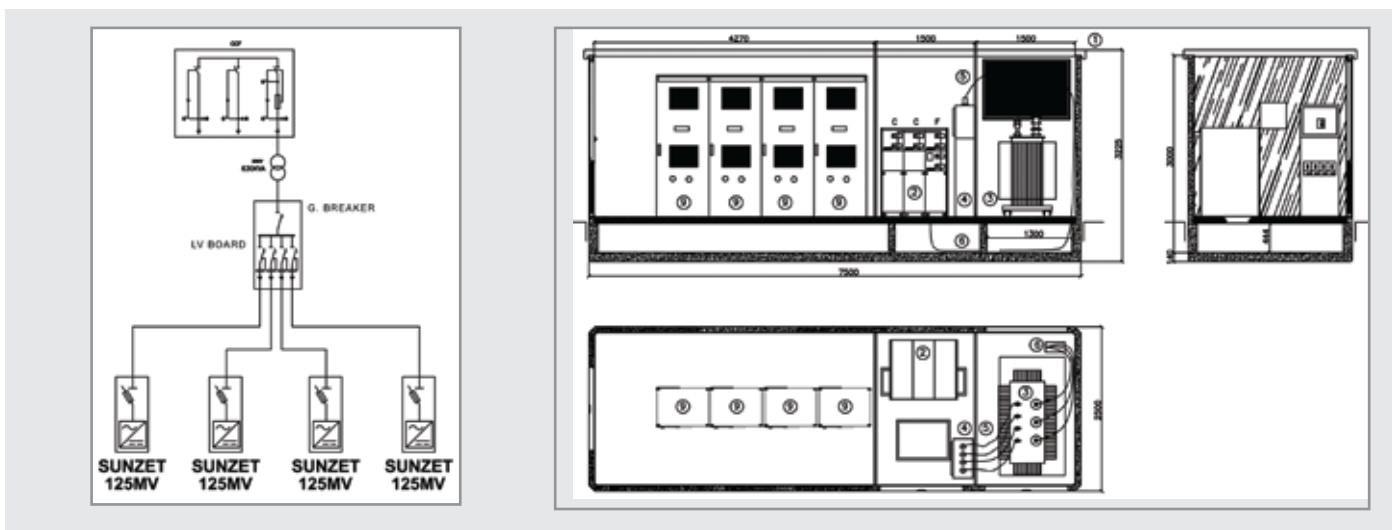
> **Model 250 KW.**

Electrical scheme and configuration



> **Model 500 KW.**

Electrical scheme and configuration



> **Model 1MW.**

Electrical scheme and configuration

